

Ph: (269)435-4Art
 (4278)
 Fax (269)435-4507

www.arestroomtrailer.com



P.O. Box 97
 67351 US 131
 Constantine, MI 49042

Farmhouse LE-1203-W Restroom Trailer

Standard Equipment / Specifications

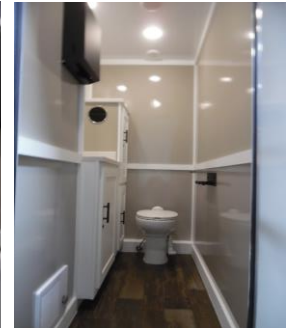
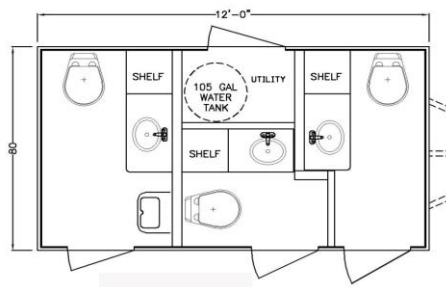
Trailer Specifications

144"x80"H/D Undercoated Steel Frame
 2 5/16 Hitch
 7,000lb Torsion Axle W/Brakes
 16" Radial Tires W/ 8 Hole Aluminum Wheels
 (4) 5000# Pipe Mount Leveling Jacks
 Approx. 460 Gallon Waste Tank
 7 Way Plug and Break Away Cable
 DOT Safety and LED Exterior Lights
 Switched Porch Light @ Each Entry Door
 Rain Gutter Over Each Entry Door
 Seamless Aluminum Roof

Fastenerless Exterior - **Customer Choose Color**
 Solid Flip Up Steps
 Waste Tank Sight Gauge & 3" Banjo Valve
 Walls-Ceiling-Floor 16" O/C
 Walls & Ceiling Insulated
 20 AMP Electrical Circuit(s)
 Deep Cell Battery W/Disconnect
 A/C D/C Converter/Charger
 Twist Lock Cord(s) W/ 15AMP Adapter(s)
 City Water Hook Up
 13,500 BTU Ducted A/C
 HVAC Remote Sensor & Drain Kits

Interior Specifications

Composite Cabinetry -- **White-W/ Black Hardware**
 Composite Trim -- **White**
 Smooth Wall -- **Tan**
 Shiplap Accent Wall-**White**
 Smooth Fiberglass Ceiling Surface --**White**
 H/D Linoleum -**Flatrions**
 Integrated Solid Surface Square Sink -**Glacier White**
 Solid Surface Counter Tops -- **Thunder Cloud**
 Touchless Faucets-**Black**
 China Foot Flush Stools / Waterless Urinal -- White
 LED Recessed Ceiling Lights
 Safety Backed Glass Mirror (1 per side)
 Fresh Water System (Tank Size is 105 gallons)
 On Demand Water Pump



OPTIONS IN RED HAVE BEEN INSTALLED ON UNIT

- 1 **FRP Laminated Exterior Walls (White In Color)- Increases Overall Frame Length and Width by 1"**
 Stone Guard
 Extra / RV Style Dump Valve (Location Customers Choice)
 Interchangeable Gender Signs
- 1 **Wall Mount Heat Package (1 Heater per Side)**
 Winter Package (Dump Valve & Waste Tank Heaters, Insulated Tank, and Heat in the Utility Room)
- 1 **Extreme Package (Includes Winter Package, Heat in Utility Room, Heated and Insulated Water Lines Running on Exterior Walls in Chase)**
 Spare Tire (Aluminum Wheel shipped loose --Front Mount Additional)
 Front Mount Spare Tire
- 1 **Occupancy Sensors (1 per Side)**
- 1 **Stereo System FM/BT/USB/CD (1 Speaker Per Side)**
- 1 **Touchless Soap Dispensers-Black- (mounted in counter top)**
- 1 **GZILA Double Toilet Paper Holder with Shelf Black**
- 1 **ASI 0210-41 (Surface Mount Black Stainless Steel C-Fold) 1 per Sink**
 Flush Urinal
- 1 **Hot Water Heater (on separate circuit)**
 Solar Package W/Two Batteries