

Ph: (269)435-4Art  
(4278)

Fax (269)435-4507

www.arestroomtrailer.com



P.O. Box 97  
67351 US 131  
Constantine, MI 49042

## Luxury Estate LE-1404-W Restroom Trailer # 1471

### Standard Equipment / Specifications

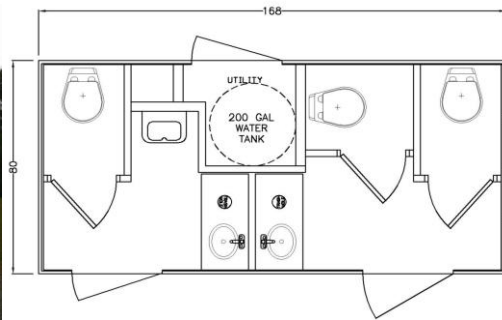
#### Trailer Specifications

168"x80"H/D Undercoated Steel Frame  
2 5/16 Hitch  
7,000lb Torsion Axle W/Brakes  
16" Radial Tires W/ 8 Hole Aluminum Wheels  
(4) 5000# Pipe Mount Leveling Jacks  
Approx. 535 Gallon Waste Tank  
7 Way Plug and Break Away Cable  
DOT Safety and LED Exterior Lights  
Switched Porch Light @ Each Entry Door  
Wide Entry Doors  
Rain Gutter Over Each Entry Door  
Seamless Aluminum Roof

Fastenerless Exterior - **Customer Choose Color**  
Solid Flip Up Steps  
Waste Tank Sight Gauge & 3" Banjo Valve  
Walls-Ceiling-Floor 16" O/C  
Walls & Ceiling Insulated  
20 AMP Electrical Circuit(s)  
Deep Cell Battery W/Disconnect  
A/C D/C Converter/Charger  
Twist Lock Cord(s) W/ 15AMP Adapter(s)  
City Water Hook Up  
13,500 BTU Ducted A/C  
HVAC Remote Sensor & Drain Kits

#### Interior Specifications

Custom Cabinetry & Trim -- **White**  
Customer Choose Color Scheme--**Gray**  
Top 4' of Wall Smooth Finish -- **Light** Color of Color Scheme  
Bottom Wall Smooth Finish--**Dark** Color of Color Scheme  
Smooth Fiberglass Ceiling Surface --**White**  
H/D Linoleum -**Color Scheme** (Gray/Flatrics) (Tan /Timber)  
Stainless Steel Sinks / Chrome fixtures  
Corian Solid Surface Counter Tops -- **Color Scheme**  
Metered Faucets  
Soap Dispensers (mounted in counter top)  
China Foot Flush Stools / Waterless Urinal -- White  
LED Recessed Ceiling Lights  
Safety Backed Glass Mirror (1 per side)  
Fresh Water System (Tank Size is 200 gallons)  
On Demand Water Pump



### OPTIONS IN RED HAVE BEEN INSTALLED ON UNIT

- 1 **FRP Laminated Exterior Walls (White In Color)- Increases Overall Frame Length and Width by 1"**  
Stone Guard  
Extra / RV Style Dump Valve (Location Customers Choice)
- 1 **Luxury Interior-Gray Only (Square Trim-Flat Panel Doors-Shipap Accent Wall-Wood Framed Mirrors-Limestone Countertops W/Square Under Mount Sink)**
- 1 **Toe Kick Heat Package (1 Heater per Side)**  
Winter Package (Dump Valve & Waste Tank Heaters, and Insulated Tank)  
Extreme Package (Includes Winter Package, Heat in Utility Room, Heated and Insulated Water Lines Running on Exterior Walls in Chase)  
Spare Tire (Aluminum Wheel shipped loose --Front Mount Additional)  
Front Mount Spare Tire
- 1 **Stereo System FM/BT/USB/CD (1 Speaker Per Side)**
- 1 **Toilet Paper Holders (812 Chrome Surface Mount) 1 per Toilet**
- 1 **Paper Towel Dispensers (262 Surface Mount Stainless Steel C-Fold) 1 per Sink**
- 1 **Flush Urinal**
- 1 **Hot Water Heater (on separate circuit)**  
Solar Package W/Two Batteries