

Ph: (269)435-4Art
(4278)

Fax (269)435-4507

www.arestroomtrailer.com



P.O. Box 97
67351 US 131
Constantine, MI 49042

Embassy LE-1404-W Restroom Trailer #1501

Standard Equipment / Specifications

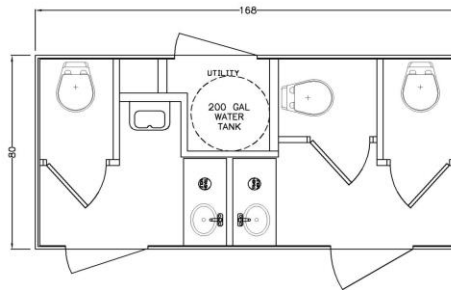
Trailer Specifications

168"x80"H/D Undercoated Steel Frame	Fastenerless Exterior - Customer Choose Color
2 5/16 Hitch	Solid Flip Up Steps
7,000lb Torsion Axle W/Brakes	Waste Tank Sight Gauge & 3" Banjo Valve
16" Radial Tires W/ 8 Hole Aluminum Wheels	Walls-Ceiling-Floor 16" O/C
(4) 5000# Pipe Mount Leveling Jacks	Walls & Ceiling Insulated
Approx. 535 Gallon Waste Tank	20 AMP Electrical Circuit(s)
7 Way Plug and Break Away Cable	Deep Cell Battery W/Disconnect
DOT Safety and LED Exterior Lights	A/C D/C Converter/Charger
Switched Porch Light @ Each Entry Door	Twist Lock Cord(s) W/ 15AMP Adapter(s)
Wide Entry Doors	City Water Hook Up
Rain Gutter Over Each Entry Door	13,500 BTU Ducted A/C
Seamless Aluminum Roof	HVAC Remote Sensor & Drain Kits

Interior Specifications

Custom Maple Cabinetry & Trim
Color Scheme --**Dark Executive**
Top Wall finish --Oak
Bottom Wall Finish--Stone
Smooth Fiberglass Ceiling Surface --**White**
H/D Wood Grain Linoleum
Integrated Corian Sink / Chrome fixtures
Corian Solid Surface Counter Tops -- **Elegant Gray**
Metered Faucets
Soap Dispensers (mounted in counter top)
China Foot Flush Stools / Waterless Urinal -- White
LED Recessed Ceiling Lights
Safety Backed Glass Mirror (1 per side)
Fresh Water System (Tank Size is 200 gallons)
On Demand Water Pump

BASE PRICE: \$41,050



OPTIONS IN RED HAVE BEEN INSTALLED ON UNIT

- 1 **FRP Laminated Exterior Walls (White In Color)- Increases Overall Frame Length and Width by 1"**
Stone Guard
Extra / RV Style Dump Valve (Location Customers Choice)
- 1 **Toe Kick Heat Package (1 Heater per Side)**
Winter Package (Dump Valve & Waste Tank Heaters, Insulated Waste Tank & Heat in Utility Room)
Extreme Package (Includes Winter Package and Heated Water Lines Running on Exterior Walls in Chase)
Spare Tire (Aluminum Wheel shipped loose --Front Mount Additional)
Front Mount Spare Tire
- 1 **Stereo System FM/BT/USB/CD (1 Speaker Per Side)**
- 1 **Toilet Paper Holders (812 Chrome Surface Mount) 1 per Toilet**
- 1 **Paper Towel Dispensers (262 Surface Mount Stainless Steel C-Fold) 1 per Sink**
Flush Urinal
- 1 **Hot Water Heater (on separate circuit)**
Solar Package W/Two Batteries