

Ph: (269)435-4Art
(4278)

Fax (269)435-4507

www.arestroomtrailer.com



P.O. Box 97
67351 US 131
Constantine, MI 49042

Embassy LE-1404-W Restroom Trailer #1501

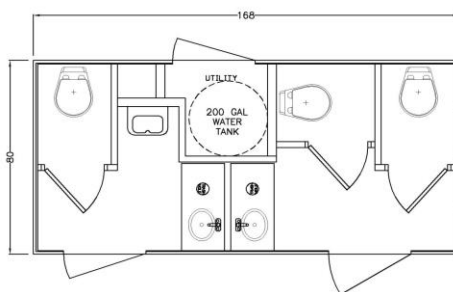
Standard Equipment / Specifications

Trailer Specifications

168"x80"H/D Undercoated Steel Frame	Fastenerless Exterior - Customer Choose Color
2 5/16 Hitch	Solid Flip Up Steps
7,000lb Torsion Axle W/Brakes	Waste Tank Sight Gauge & 3" Banjo Valve
16" Radial Tires W/ 8 Hole Aluminum Wheels	Walls-Ceiling-Floor 16" O/C
(4) 5000# Pipe Mount Leveling Jacks	Walls & Ceiling Insulated
Approx. 535 Gallon Waste Tank	20 AMP Electrical Circuit(s)
7 Way Plug and Break Away Cable	Deep Cell Battery W/Disconnect
DOT Safety and LED Exterior Lights	A/C D/C Converter/Charger
Switched Porch Light @ Each Entry Door	Twist Lock Cord(s) W/ 15AMP Adapter(s)
Wide Entry Doors	City Water Hook Up
Rain Gutter Over Each Entry Door	13,500 BTU Ducted A/C
Seamless Aluminum Roof	HVAC Remote Sensor & Drain Kits

Interior Specifications

Custom Maple Cabinetry & Trim
Color Scheme --**Dark Executive**
Top Wall finish --Oak
Bottom Wall Finish--Stone
Smooth Fiberglass Ceiling Surface --**White**
H/D Wood Grain Linoleum
Integrated Corian Sink / Chrome fixtures
Corian Solid Surface Counter Tops -- **Elegant Gray**
Metered Faucets
Soap Dispensers (mounted in counter top)
China Foot Flush Stools / Waterless Urinal -- White
LED Recessed Ceiling Lights
Safety Backed Glass Mirror (1 per side)
Fresh Water System (Tank Size is 200 gallons)
On Demand Water Pump



OPTIONS IN RED HAVE BEEN INSTALLED ON UNIT

- 1 **FRP Laminated Exterior Walls (White In Color)- Increases Overall Frame Length and Width by 1"**
Stone Guard
Extra / RV Style Dump Valve (Location Customers Choice)
- 1 **Toe Kick Heat Package (1 Heater per Side)**
Winter Package (Dump Valve & Waste Tank Heaters, Insulated Waste Tank & Heat in Utility Room)
Extreme Package (Includes Winter Package and Heated Water Lines Running on Exterior Walls in Chase)
Spare Tire (Aluminum Wheel shipped loose --Front Mount Additional)
Front Mount Spare Tire
- 1 **Stereo System FM/BT/USB/CD (1 Speaker Per Side)**
- 1 **Toilet Paper Holders (812 Chrome Surface Mount) 1 per Toilet**
- 1 **Paper Towel Dispensers (262 Surface Mount Stainless Steel C-Fold) 1 per Sink**
Flush Urinal
- 1 **Hot Water Heater (on separate circuit)**
Solar Package W/Two Batteries